

ST Hood Short Type

DH-28GR

DH-29CR

DH-30CR



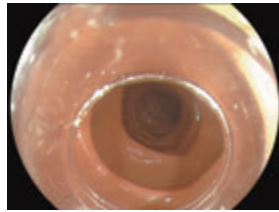
- Small-caliber-tip hood short-type to support endoscopic procedures

ST Hood Short Type

Maintains the endoscopic field of view during clinical procedures such as ESD

Application of hoods

- To be attached to the tips of endoscopes
- Prevents the operative field from being disturbed by the mucous membrane
- Ensures a good operative field during endoscopic procedures such as EMR, ESD, POEM, etc.






Sample image (Short-type)



Features

- Small-caliber tip short design
- 7.0 mm distance from the distal end and an inner diameter of 8.0 mm to support visibility
- Two drains for draining of fluid
- Sterile and single-use
- No guide ditch, allowing easier insertion of accessories

Model name	Outer diameter	Distance from the endoscope tip	Inner diameter of distal end	Drain	Guide ditch
 DH-28GR	11.8 mm	7.0 mm	8.0 mm	2	Without
 DH-29CR	13.0 mm	7.0 mm	8.0 mm	2	Without
 DH-30CR	14.8 mm	7.0 mm	8.0 mm	2	Without

Generic name: Single-use non-active equipment for natural orifice endoscopic treatment
 Package: 5 pcs per pack

Related products

FlushKnife BT

Covering procedures from marking to hemostasis, this slitter equipped with the water jet system offers high versatility. The ball tip produces good traction during dissection.



FlushKnife N

The water jet system, which cleans the tip of the knife, keeps the knife sharp throughout the operation. This slitter covers from marking to hemostasis.



Generic Name: Active instrument, endoscopic, high-frequency current procedure, single-use

FUJIFILM

FUJIFILM Corporation

26-30, NISHIAZABU 2-CHOME, MINATO-KU, TOKYO 106-8620, JAPAN
<http://www.fujifilm.com/>

Specifications are subject to change without notice.

- The exterior appearance and specifications maybe subject to change without prior notice for product improvement purposes.
- For use of these products, read the operation manual provided with the product.

SGE-132-01 Printed in JAPAN 201510-FP(OP)